

The Game is On for Dedeaux Properties, LLC

For Immediate Release
August 26, 2015

Runs Scored for Dedeaux Properties, LLC as the firm closed escrow on the recently completed 137,000 SF food warehouse/distribution facility in the heart of Vernon. The facility was purchased by a Nationally recognized produce distributor.

3305 Bandini Blvd, Vernon, CA Bandini



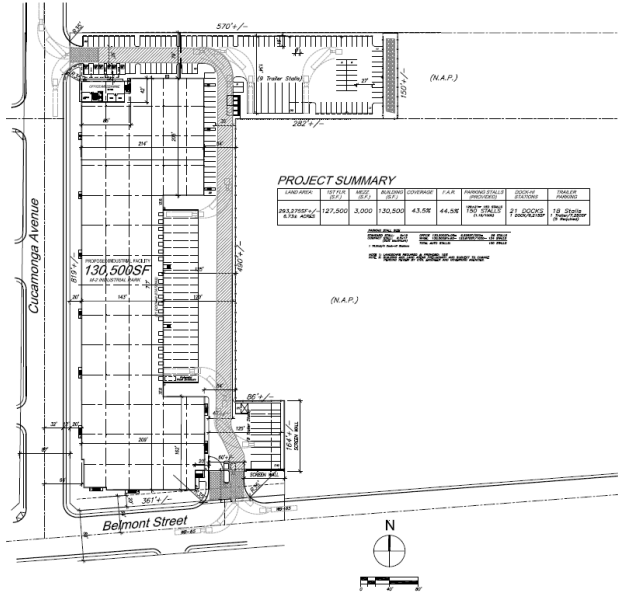
Rounding the bases in Rancho Cucamonga. Walls now up and near completion at 9060 Rochester Ave. Construction culminating later this year and the 126,000 SF state-of-the-art facility is under contract with a regional pet food distribution firm. The building is situated on over 5 acres of prime IE land.

9060 Rochester Ave., Rancho Cucamonga, CA 91730



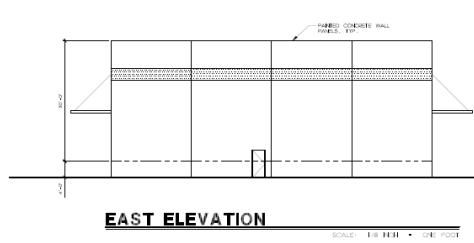
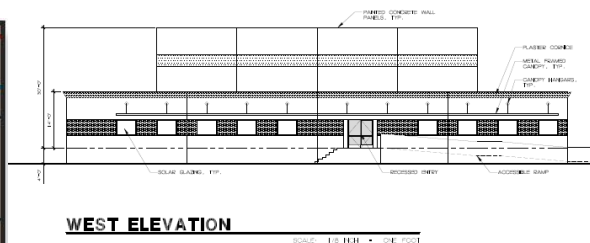
Next at Bat in Ontario, CA, is the Cucamonga/Belmont project. Located on the Corner of Cucamonga Ave. and Belmont, this 130,000 SF project will be the latest in the Inland Empire area. Breaking ground September 2015, the company will develop a state of the art distribution building with excess trailer parking.

989 Cucamonga Ave., Ontario CA



Heading to the Plate is Dedeaux Properties' Redwood site in the city of Fontana. The 9 acre site was acquired by the firm in 2014. Construction scheduled to commence early 2016 where the firm will construct a transportation/distribution facility to a National 3rd party logistic firm on a long term lease.

Redwood Fontana



On Deck in the City of Industry is the recently acquired Nelson site in the coveted City of Industry. Dedeaux Properties recently closed escrow on the 6.2 acre site and are scheduled to begin construction 1st Quarter 2016.

15000 Nelson



ABOUT DEDEAUX PROPERTIES, LLC: Dedeaux Properties is an active 3rd generation Los Angeles based industrial real estate investment, development, and management firm with a portfolio of over 6 million sq. ft. of primarily distribution and transportation properties largely in Southern California but includes a strategic presence in Chicago. Currently, the firm has a pipeline of approximately 523,000 sq. ft. comprised of 4 separate industrial development projects in various stages of development and entitlement at prime industrial sites in Southern California.

FOR MORE INFORMATION CONTACT:

Jessica Pisula
Marketing Director
DEDEAUX PROPERTIES, LLC
jessicap@dedeauxproperties.com
323-981-8293