

**FOR IMMEDIATE RELEASE**

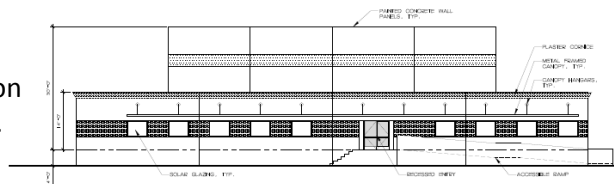
February 23, 2015

**Dedeaux Properties Shoveling Dirt in the IE on 3 New Projects**

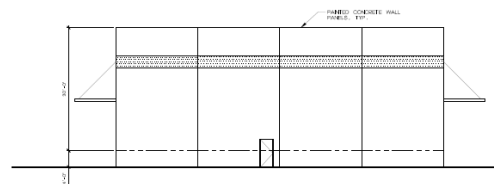
**RANCHO CUCAMONGA, CA:** Dedeaux Properties recently poured the foundation on an approximate 120,624 sq. ft. distribution center on Rochester Ave. in the Rancho Cucamonga area, scheduled for completion later this year. The state-of-the-art facility has been pre-committed to a regional pet food distribution firm. Click [here](#) for website and brochure.



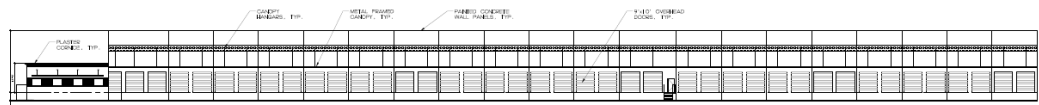
**FONTANA, CA:** In Fontana, Dedeaux Properties recently closed escrow on an over 9 acre site on Redwood Ave. where the firm will begin construction on a transportation/distribution facility for a national 3<sup>rd</sup> party logistics firm on a long-terms lease at the middle of the year.



**WEST ELEVATION**  
SCALE: 1/8" = 1'-0" • ONE FOOT



**EAST ELEVATION**  
SCALE: 1/8" = 1'-0" • ONE FOOT



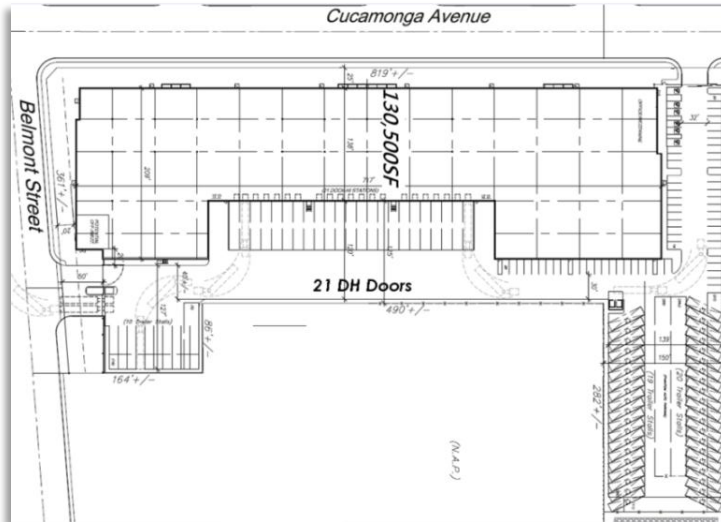
**SOUTH ELEVATION (NORTH - OPPOSITE)**

ADMINISTRATIVE SITE PLAN



**ONTARIO, CA:** Last, in Ontario, the company just received approval for a 130,000 sq. ft. distribution building with excess trailer parking which will break ground in the 2nd quarter of 2015. We're excited to build again in the Inland Empire where our firm has always maintained a

strategic presence" according Principal Brett Dedeaux. Meanwhile, Director of Project Management Stephen Summers states "These properties are an excellent fit to our portfolio and we are close to announcing additional projects which illustrates are faith in the strong distribution center fundamentals of this vital logistics hub for the United States." Click [here](#) for more details.



NORTH ELEVATION



SOUTH ELEVATION



WEST ELEVATION (CUCAMONGA AVENUE)

**ABOUT DEDEAUX PROPERTIES, LLC:** Dedeaux Properties is an active 3<sup>rd</sup> generation Los Angeles based industrial real estate investment, development, and management firm with a portfolio of over 6 million sq. ft. of primarily distribution and transportation properties largely in Southern California but includes a strategic presence in Chicago. Currently, the firm has a pipeline of approximately 523,000 sq. ft. comprised of 4 separate industrial development projects in various stages of development and entitlement at prime industrial sites in Southern California. Please click [here](#) for Dedeaux Property Availabilities.

**FOR MORE INFORMATION:**

Jessica Pisula, Marketing Director  
DEDEAUX PROPERTIES, LLC  
545 S Figueroa St., Suite 1215  
Los Angeles, CA 90071  
323-981-8293



[jessicap@dedeauxproperties.com](mailto:jessicap@dedeauxproperties.com)  
[www.dedeauxproperties.com](http://www.dedeauxproperties.com)